



SCIENCE BASED TARGETS NETWORK
GLOBAL COMMONS ALLIANCE

Launch of Initial Guidance for Business: Corporate Action for a Net-Zero, Nature-Positive Future

**World Economic Forum 2020 Sustainable
Development Impact Summit**

22 September 2020



Speakers



Johan Rockstrom
Director, Potsdam Institute for
Climate Impact Research (PIK),
Earth Commission Co-Chair



Dominic Waughray
Managing Director, Platform
for Global Public Goods, WEF;
Global Commons Alliance
Council Chair

Moderator



Erin Billman
Executive Director,
Science Based Targets
Network

Panelists



Sandra Ojiambo
Executive Director,
United Nations Global
Compact



Cristianne Close
Global Practice Leader,
Markets, WWF;
SBTN Council Member



Paul Simpson
Chief Executive Officer,
CDP



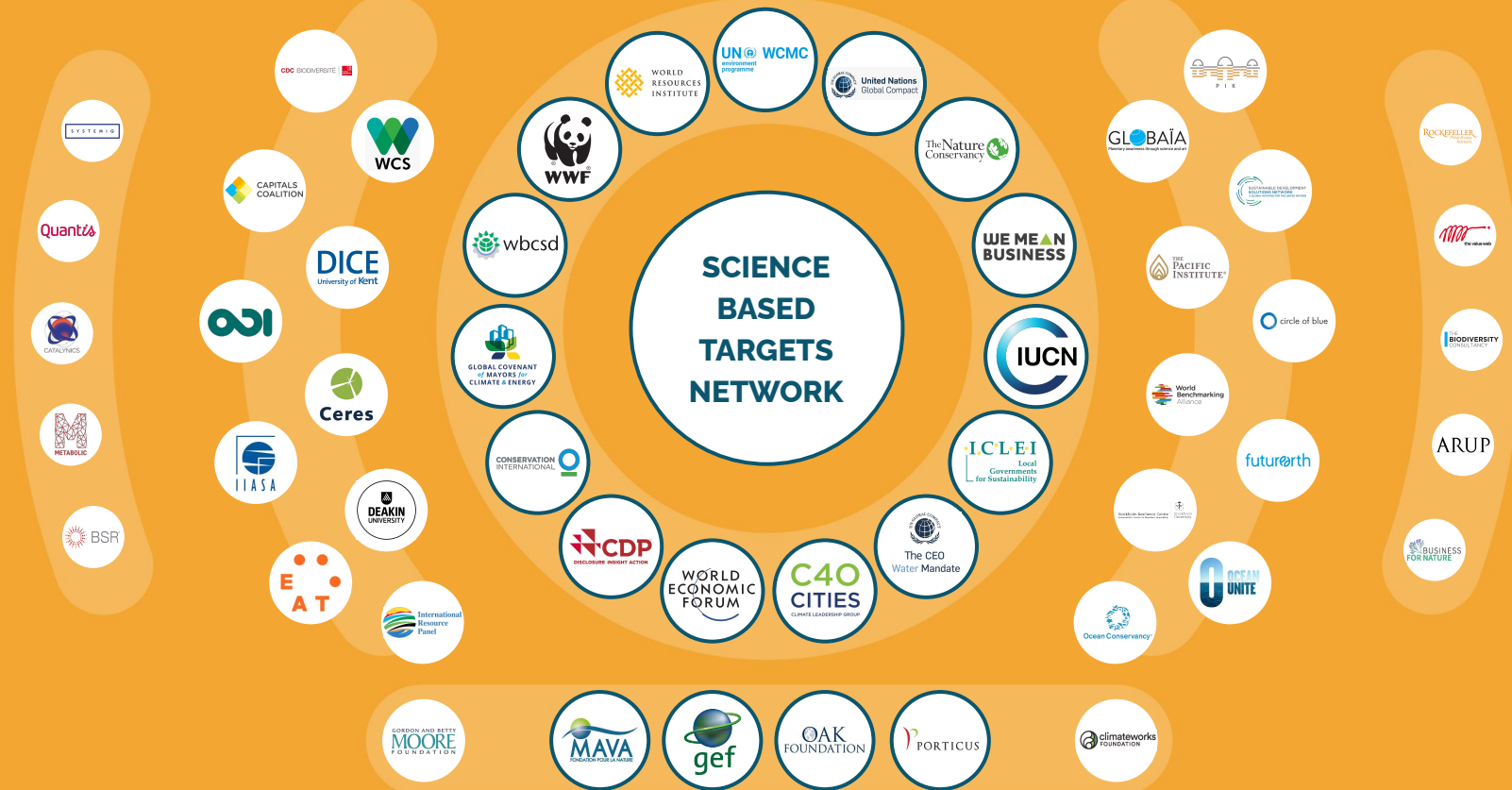
Claudia Azevedo
Board Member & CEO,
Sonae



How can a company align efforts with science, to ensure it's doing its part to ensure an equitable, net-zero, nature-positive future?



Who we are



Our first step: initial guidance on science-based targets (SBTs) for nature

The guidance has been produced in consultation with:



65+

65+ global environmental organizations, companies, and consultancies



14

Including 14 companies



22

From 22 countries



\$1.1T

With a combined market cap of \$1.1 trillion



SCIENCE-BASED TARGETS *for* NATURE

Initial Guidance for Business

EXECUTIVE SUMMARY

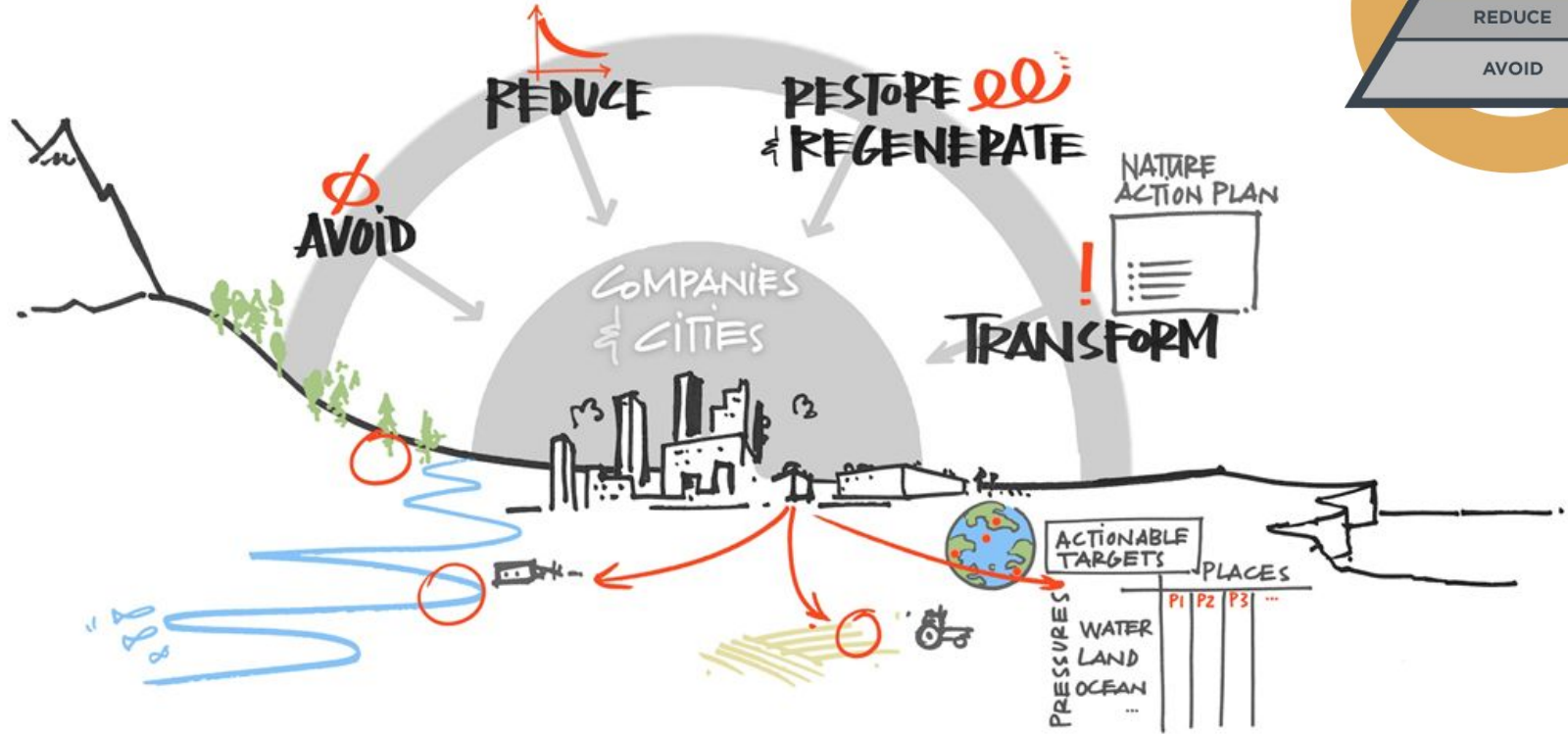
September 2020

Why SBTs for nature?

“ Nature-positive transitions could generate up to US\$10.1 trillion in annual business value and create 395 million jobs by 2030. ”

- WEF

Act framework



How to set SBTs for nature?



What now?

1. Engage with SBTN to develop & finalize methods
2. Begin gathering data
3. Measure and set targets* where possible
4. Take action to start transforming your business

*Interim targets are provided in guidance for land use change, water resource exploitation, and ecosystem integrity, in addition to climate SBTs via SBTi



SCIENCE BASED TARGETS NETWORK
GLOBAL COMMONS ALLIANCE

Panel Discussion



SCIENCE BASED TARGETS NETWORK
GLOBAL COMMONS ALLIANCE

Thank you for joining us.

www.sciencebasedtargetsnetwork.org

The Science Based Targets Network is part of the [Global Commons Alliance](#), a network of organizations, businesses and governments aiming to positively transform the world's economic systems and protect the global commons.